



How to switch to Amber (Yellow color) DRL & Parking Lights for ALPHAREX 2015-20 Ford F150 | 2017-20 Ford Raptor Headlights

ALPHAREX specializes in designing and producing superior and uniquely stylish aftermarket automotive performance lighting with unrival innovative technology. The following instruction guide we take you through on the topic: **How to switch to Amber (Yellow color) DRL & Parking lights for the new ALPHAREX HEADLIGHTS** for your 2015-20 Ford F150 | 2017-20 Ford Raptor step by step.

THIS INSTRUCTION GUIDE APPLIES FOR THE FOLLOWING ALPHAREX HEADLIGHT PRODUCT MODELS:

15-17 Ford F150 | 17-20 F150 Raptor NOVA-Series LED Projector Headlights (Chrome) / SKU: 880151

15-17 Ford F150 | 17-20 F150 Raptor NOVA-Series LED Projector Headlights (Black) / SKU: 880152

15-17 Ford F150 | 17-20 F150 Raptor NOVA-Series LED Projector Headlights (Alpha Black) / SKU: 880163

18-20 Ford F150 NOVA-Series LED Projector Headlights (Alpha Black) / SKU: 880165

18-20 Ford F150 NOVA-Series LED Projector Headlights (Chrome) / SKU: 880181

18-20 Ford F150 NOVA-Series LED Projector Headlights (Black) / SKU: 880182



Table of Contents



- **STEP 1.** How to remove & swap the circuit board
- **STEP 2.** Connect the Amber switch plugs
- **STEP 3.** Complete switching into Amber DRL & Parking lights

Disclaimer: This article is a tutorial guide. By reading this article, you agree it is for reference only and AlphaRex USA and its distributors make no guarantee on the finished results. Under no circumstances whatsoever shall AlphaRex USA nor its distributors be liable for any damage, misuse or personal injuries. If you do not fully understand the instruction procedure, it is highly recommended that you seek help from professional mechanics to do the instruction.

In order to switch for Amber (Yellow color) DRL & Parking lights, you would need to purchase the optional circuit board according the model and the year of your vehicle. (for **the NOVA-Series** headlights for 2015-20 Ford F150 and 2017-20 Ford Raptor) **By default the DRL & Parking lights color are White from factory.**



CUSTOMERS CAN UPGRADE & CHOOSE TO PURCHASE THE CIRCUIT BOARD BASED ON THEIR PREFERENCE. PLEASE NOTE: once you install the circuit board and PLUGGED & switched into Amber, the DRL & Parking lights color will remain (Yellow color) at all times.

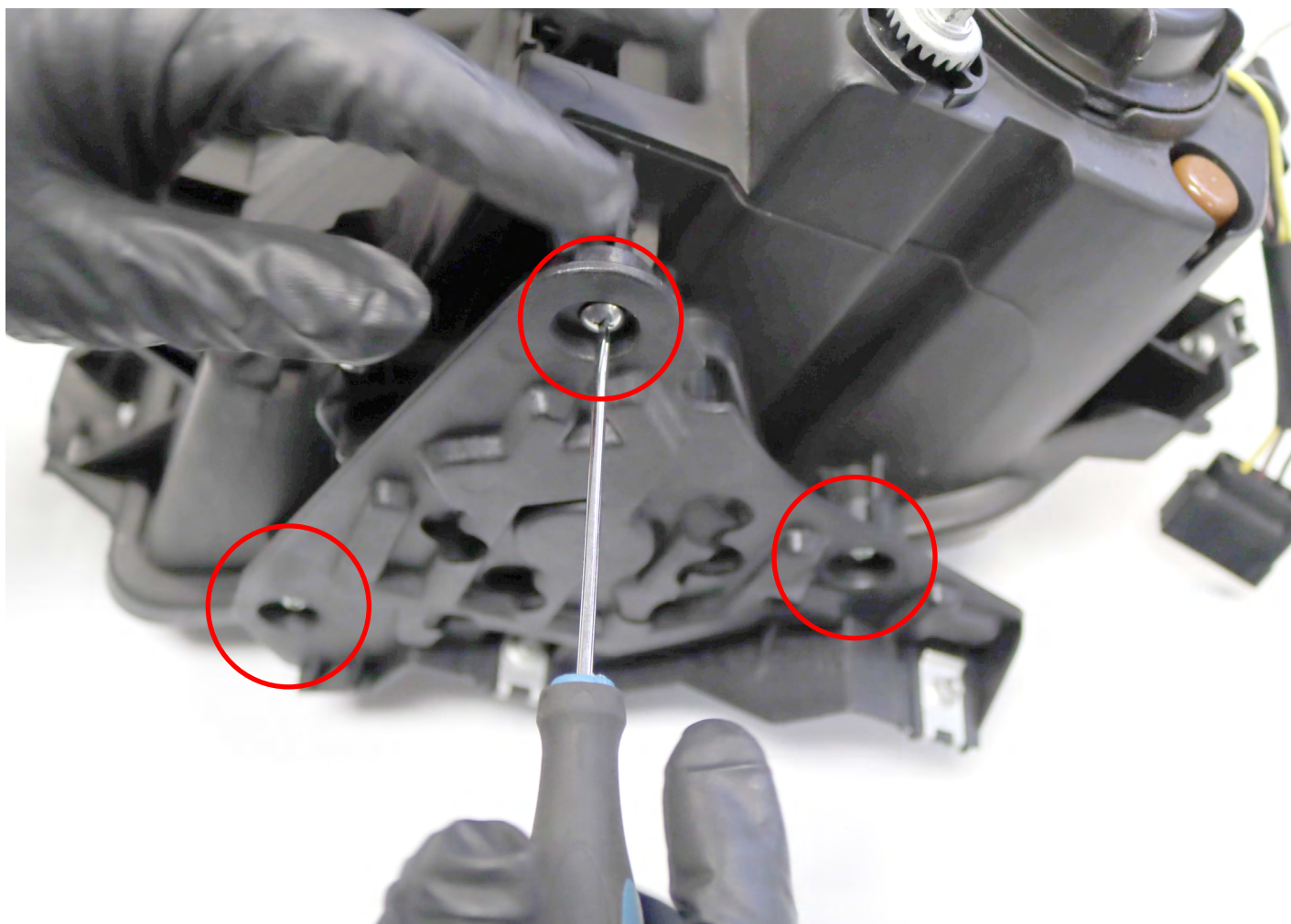


STEP 1. HOW TO REMOVE & SWAP THE CIRCUIT BOARD

From back of each ALPHAREX headlights, at the bottom you will find the factory circuit board under a mounting bracket. Please unscrew to remove bracket and remove the circuit board.



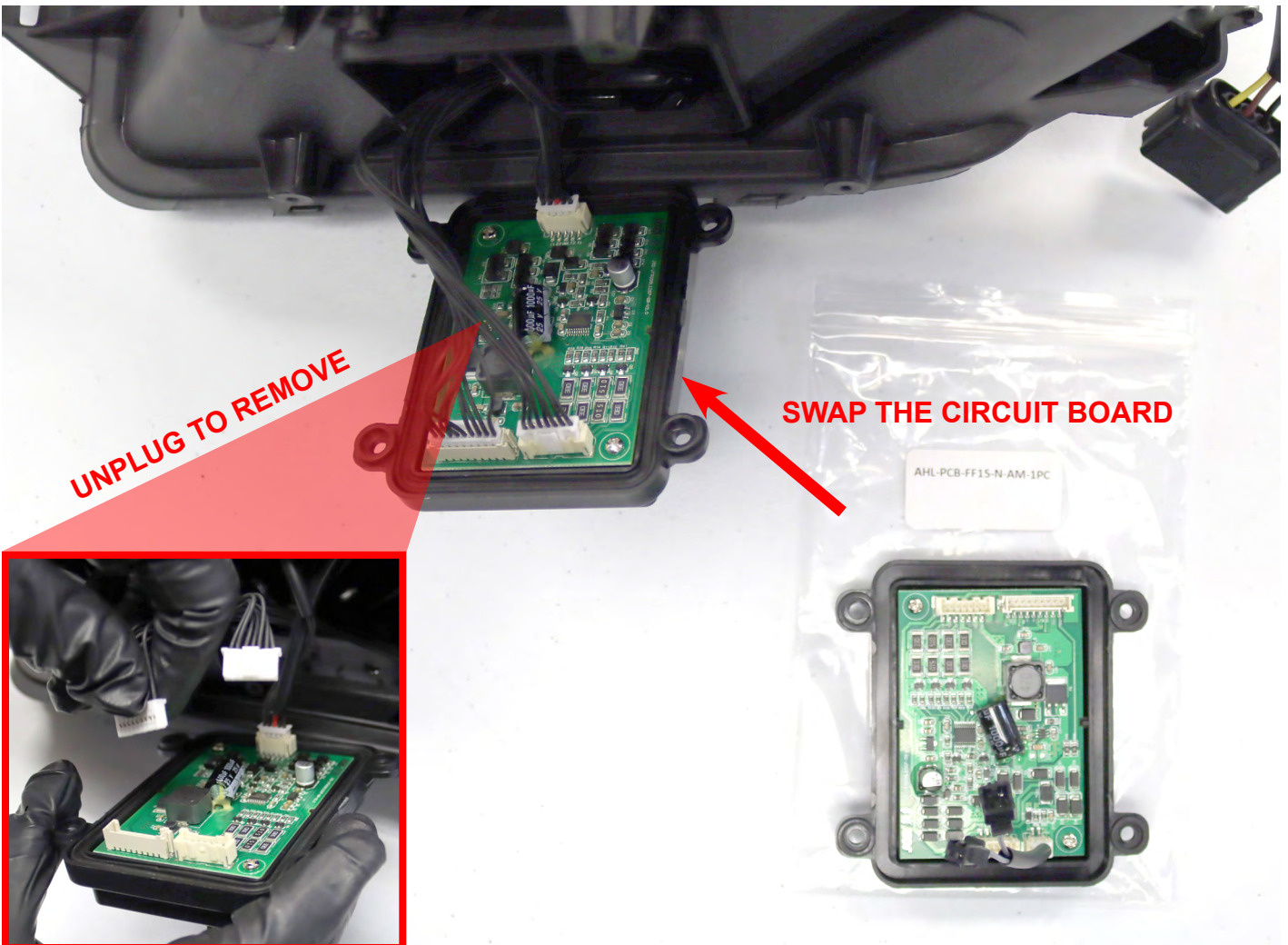
With a Phillip screwdriver unscrew the (3) screws from the mounting bracket.



Once the mounting bracket is removed, you will have access to circuit board. Please unscrew the (4) screws to open.



Unplug the wires to remove the factory circuit board and let's get ready for swap the optional circuit board.

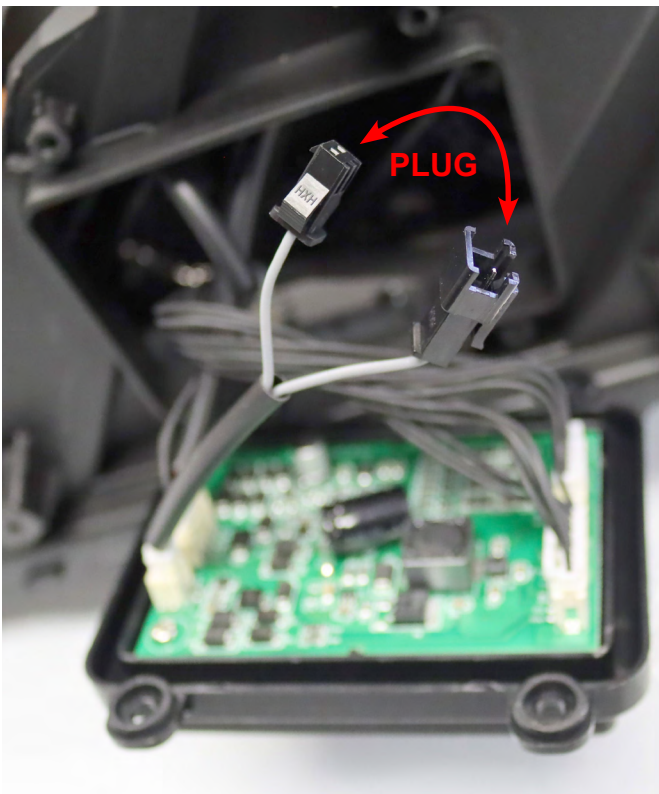


Plug the wires to the new circuit board for the swap.

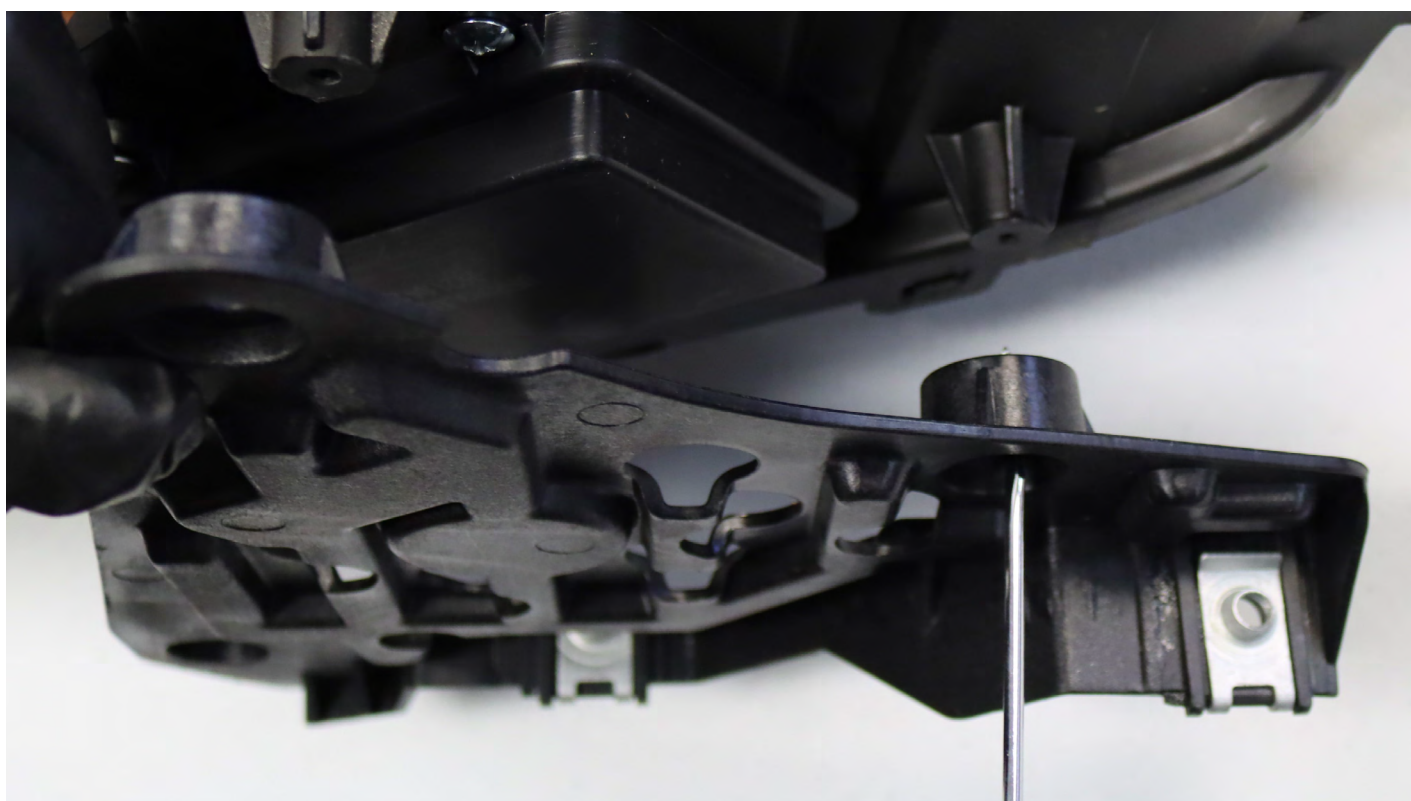


STEP 2. CONNECT THE AMBER SWITCH PLUGS

From the new circuit board you will find the amber DRL plugs. Connect plugs directly for each of the headlights.



Reverse the removal steps and reinstall the mounting bracket to complete the circuit board swap.



STEP 3. COMPLETE SWITCHING INTO AMBER DRL & PARKING LIGHTS

After plug-in the connections, please install the headlights to the vehicle.

Congratulations! You have switched into Amber (Yellow color) DRL & Parking lights.

