

advanced FLOW engineering

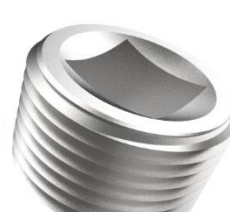
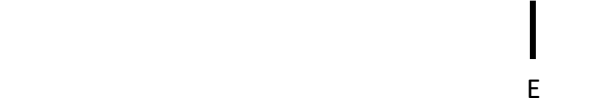
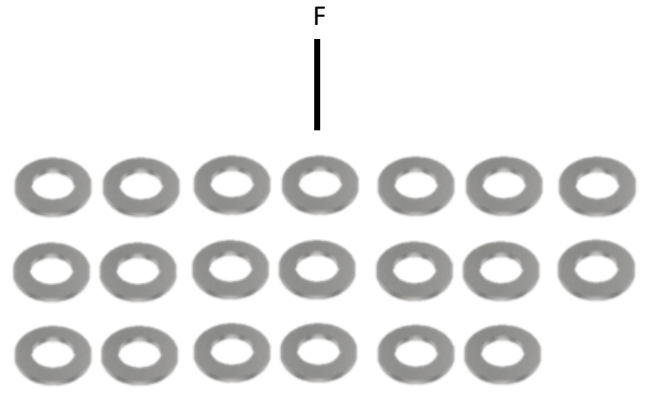
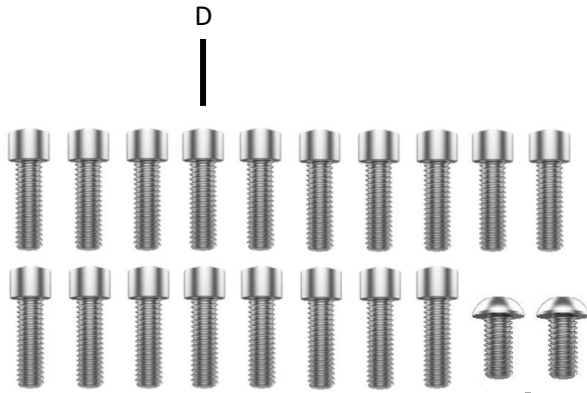
Instruction Manual P/N: 46-70340 / 46-70342

Make: **GM** Model: **2500HD/3500HD** Year: **2011-2016** Engine: **V8-6.6L**



- Please read the entire instruction manual before proceeding.
- Ensure all components listed are present.
- If you are missing any of the components, call customer support at 951-493-7100.
- Ensure you have all necessary tools before proceeding.
- Do not attempt to work on your vehicle when the engine is hot.
- Disconnect the negative battery terminal before proceeding.
- Retain factory parts for future use.

| Label | Qty. | Description | Part Number |
|-------|------|---|-------------|
| A1 | 1 | Oil Pan – Raw, Machined Fins (46-70340) | 05-60729A |
| A2 | 1 | Oil Pan – Black, Machined Fins (46-70342) | 05-60729B |
| B | 1 | Sensor Bracket | 05-60798 |
| C | 1 | RTV Silicone, Black Instant Gasket | 05-60096 |
| D | 18 | Screws, Socket Head M6x1.0x20 | 03-50241 |
| E | 2 | Screw, Button Head M6x1.0x12 | 03-50102 |
| F | 20 | Washer, Flat M6 | 03-50177 |
| G | 1 | Washer, Flat M10 | 03-50470 |
| H | 1 | Crush Washer | 03-50384 |
| I | 2 | Nut, Hex: M6 | 03-50059 |
| J | 1 | Plug, Magnetic M12x1.25 | 03-50385 |
| K | 1 | Plug, 1/2" NPT | 03-50249 |
| L | 1 | Oil Filter | 44-LF001 |



IMPORTANT NOTE:

A MINIMUM 6" LIFT IS REQUIRED FOR INSTALLATION OF THIS PAN. PLEASE ENSURE THAT THE CROSSMEMBER ON YOUR VEHICLE IS UNDER THE LINE INDICATED IN THE PICTURE BELOW.



1. Park your vehicle on a flat, dry surface. You will need to block the tires to prevent the vehicle from rolling.

Note: You will need to get under the truck to do this installation. Please use every precaution when lifting the vehicle.

2. Remove the crossmember from the vehicle to gain access to the OEM pan.
3. Place a drain pan under the oil pan. Remove the drain plug and allow the oil to drain.
4. Reinstall the drain plug.

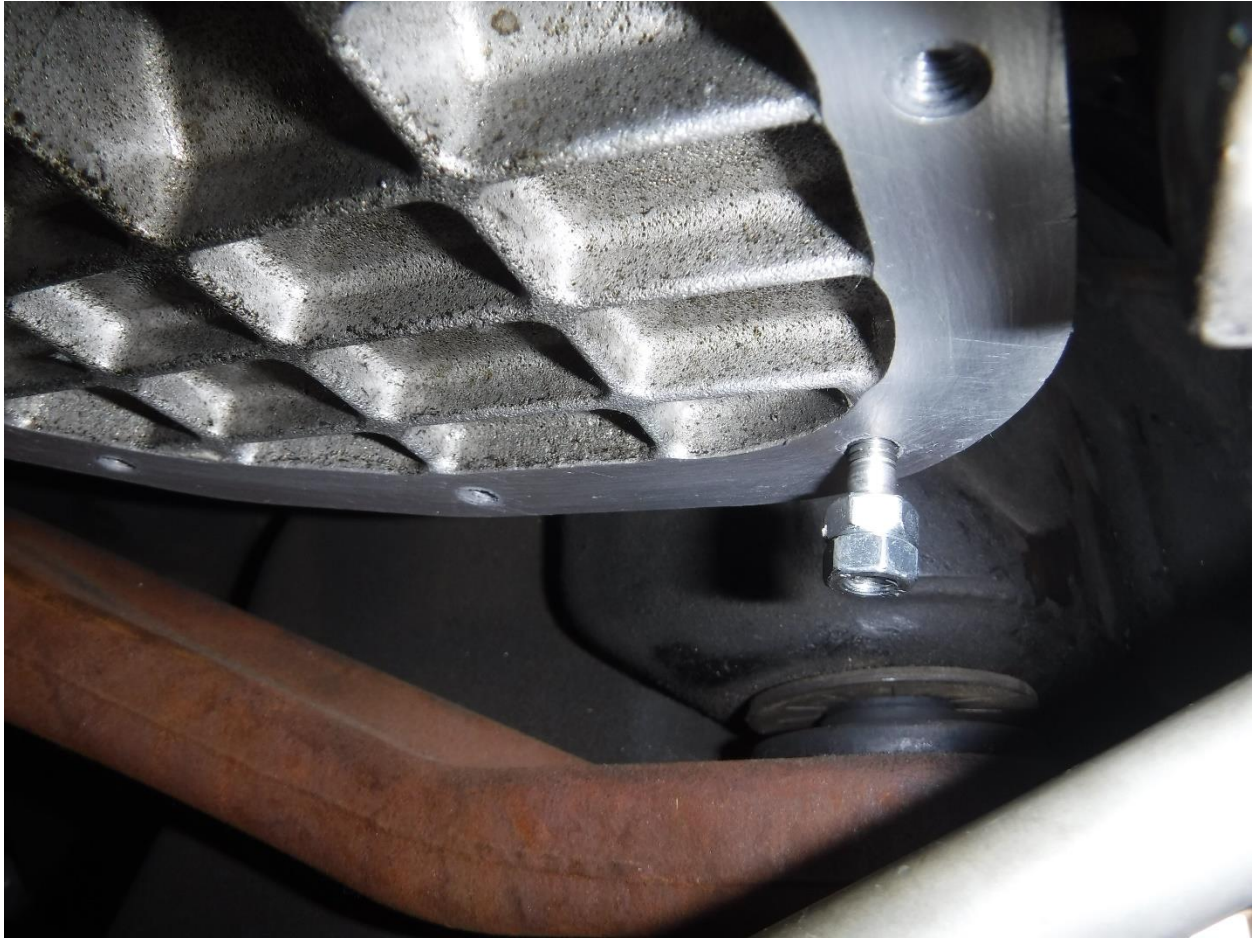


5. Disconnect the sensor connector and make sure that all wires are out of the way.

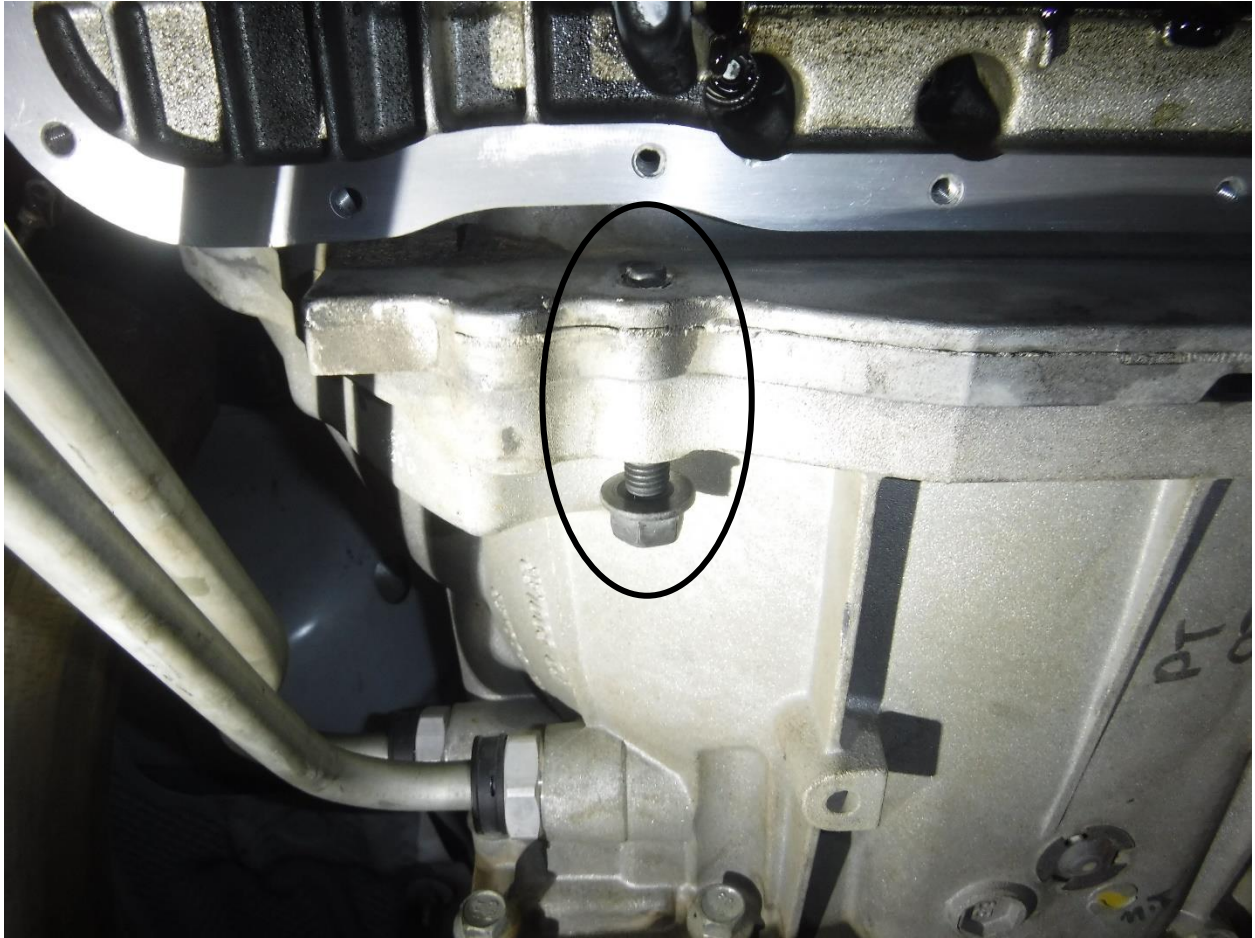


6. Remove the 16 screws from the oil pan.
7. Remove the two (2) remaining nuts from the oil pan.
8. Carefully insert a gasket scraper between the engine block and the oil pan. Pry the oil pan off. **Do not gouge the oil pan sealing surface.**

Note: There will still be about 1/2 quart of oil in the bottom of the oil pan. Be careful not to spill this remaining oil.



9. Remove the two (2) remaining studs by interlocking the two (2) supplied M6 nuts on each stud and unscrewing it from the gasket surface.
10. Clean the oil pan sealing surface with a gasket scraper. Be careful not to gouge the surface while cleaning.

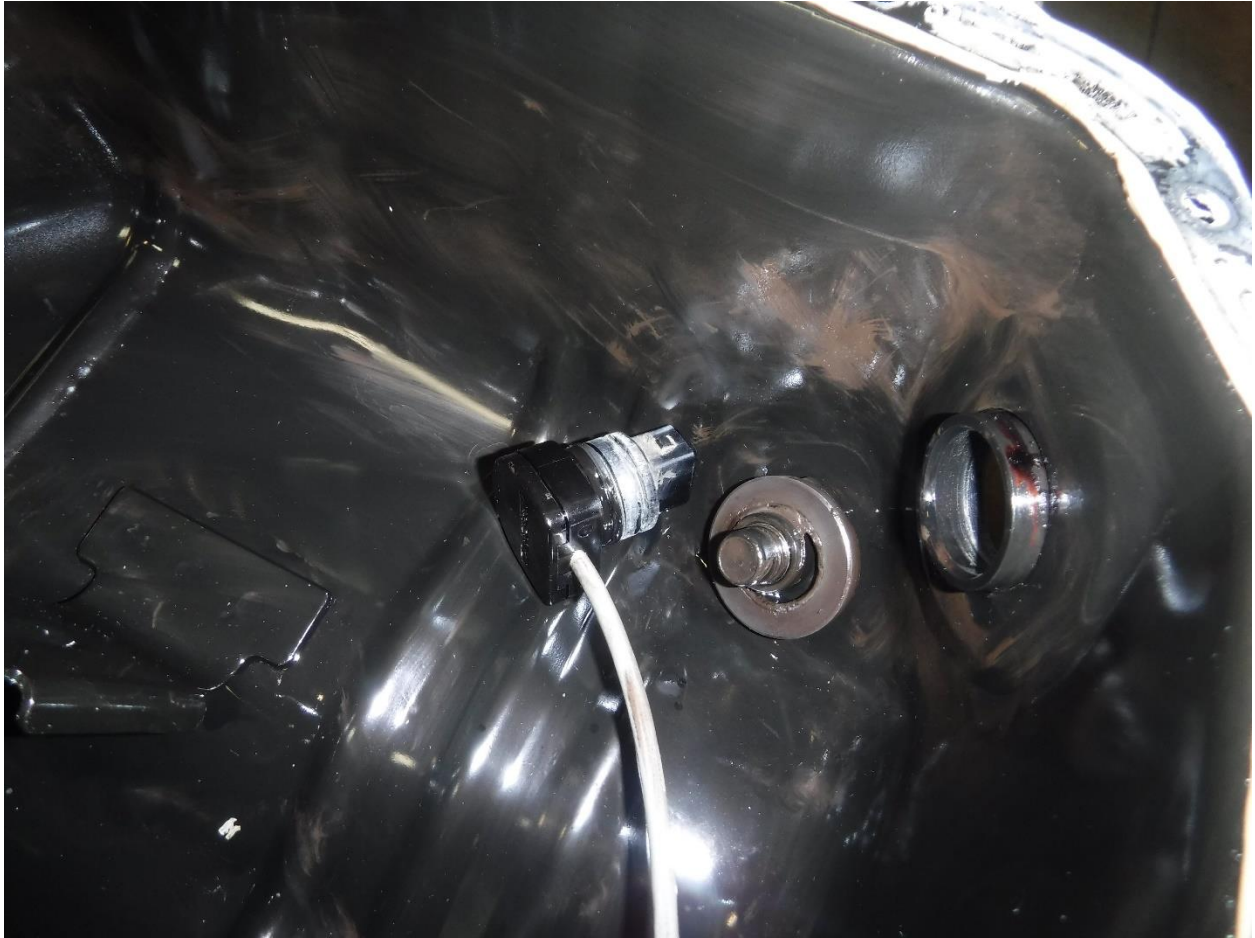


11. Completely remove the transmission bolt shown above.

12. Make sure that everything is clear and out of the way of installing the aFe oil pan.



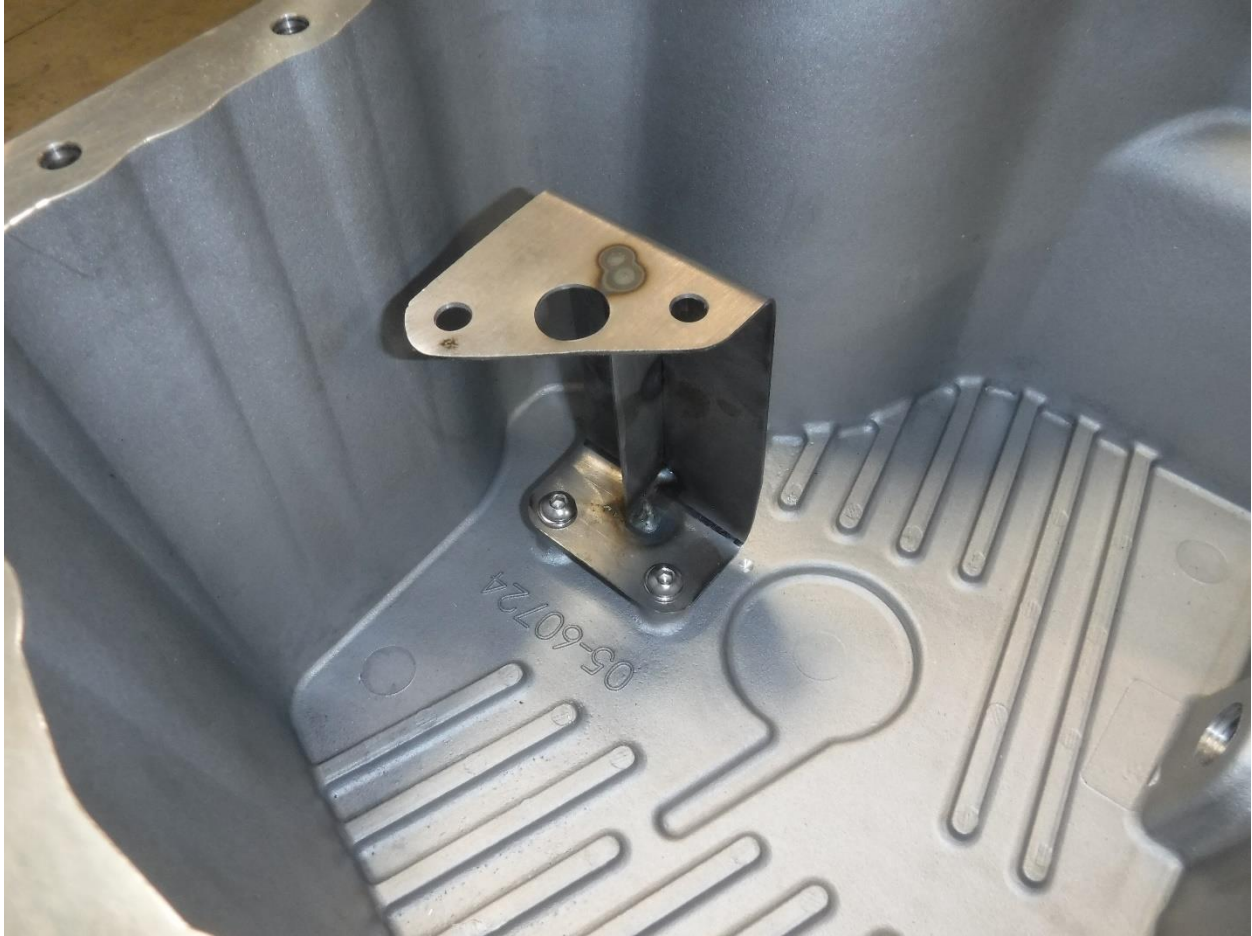
13. Pry the metal holding clip from the outside of the oil pan.



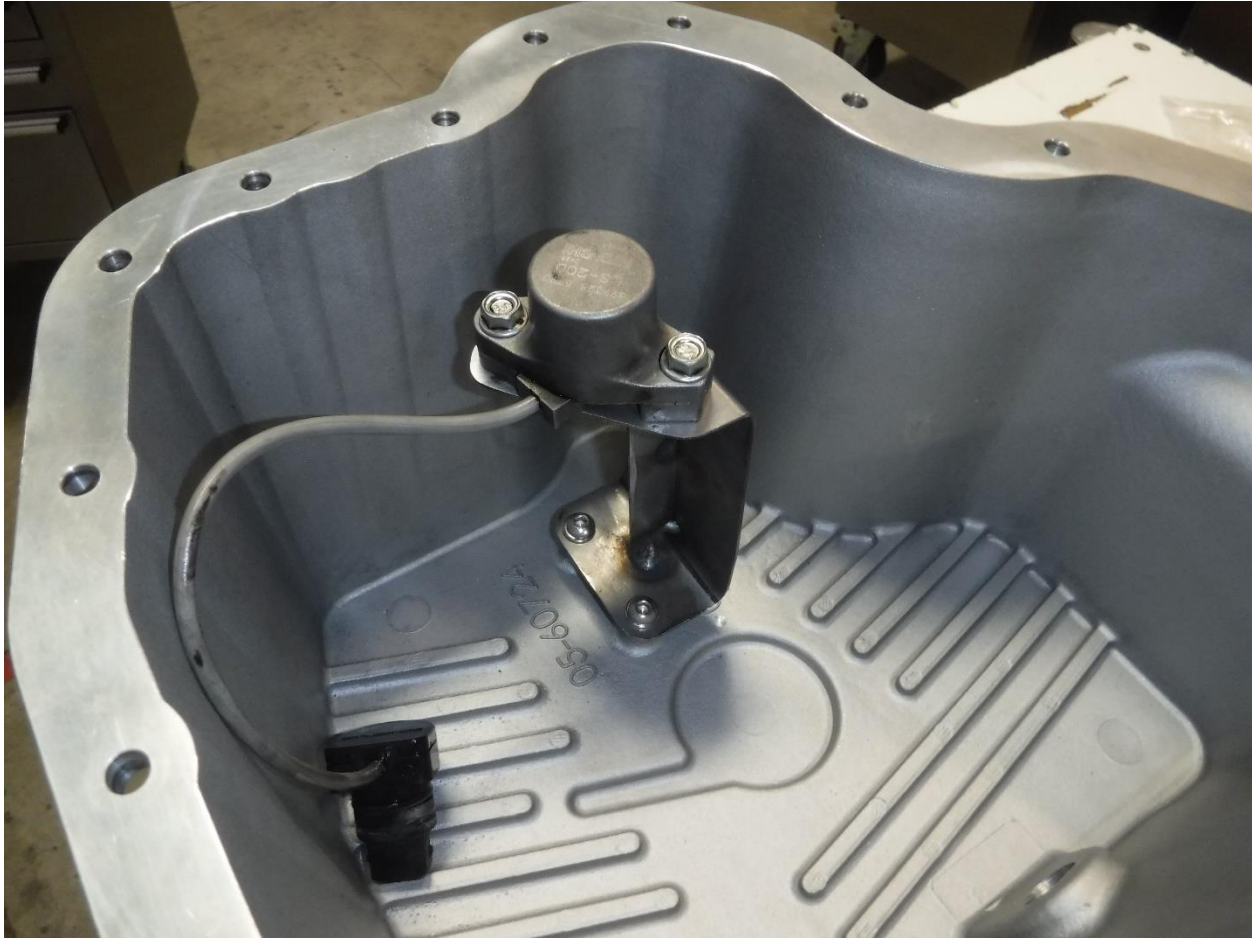
14. Once this holding clip is removed, push the connector towards the inside of the pan.



15. Remove the two (2) screws holding the sensor to the bracket inside the oil pan.



16. Attach the aFe sensor bracket to the aFe oil pan using the two (2) supplied M6x1.0x12 button head screws and M6 flat washers. Make sure the bracket is facing the correct direction as shown above.



17. Install the sensor to the aFe bracket using the two (2) screws removed in step 15 and the two (2) M6 nuts used in step 9.



18. Carefully install the sensor connector in the aFe oil pan by pushing it through from the inside of the pan.
19. Re-install the holding clip on the outside of the pan.



20. Hold the aFe oil pan up to the gasket surface to make sure you will be able to maneuver it into place. We recommend lifting the passenger side of the pan into place first.
21. Once you have a clear path to lift the aFe oil pan into place, prepare all the required hardware to secure it into place. This includes the 18 supplied M6x1.0x20 socket head screws and M6 flat washers.
22. Spread the supplied RTV silicone across the gasket surface. Be generous when spreading the silicone across the surface and make sure that all the bolt holes are completely surrounded.



23. Hold the oil pan up into position, aligning the screw holes. Install four (4) M6x1.0x20 socket head screws and M6 flat washers into each of the corners to hold the pan into place.

Note: Be careful not to move the pan around once it touches the gasket surface.

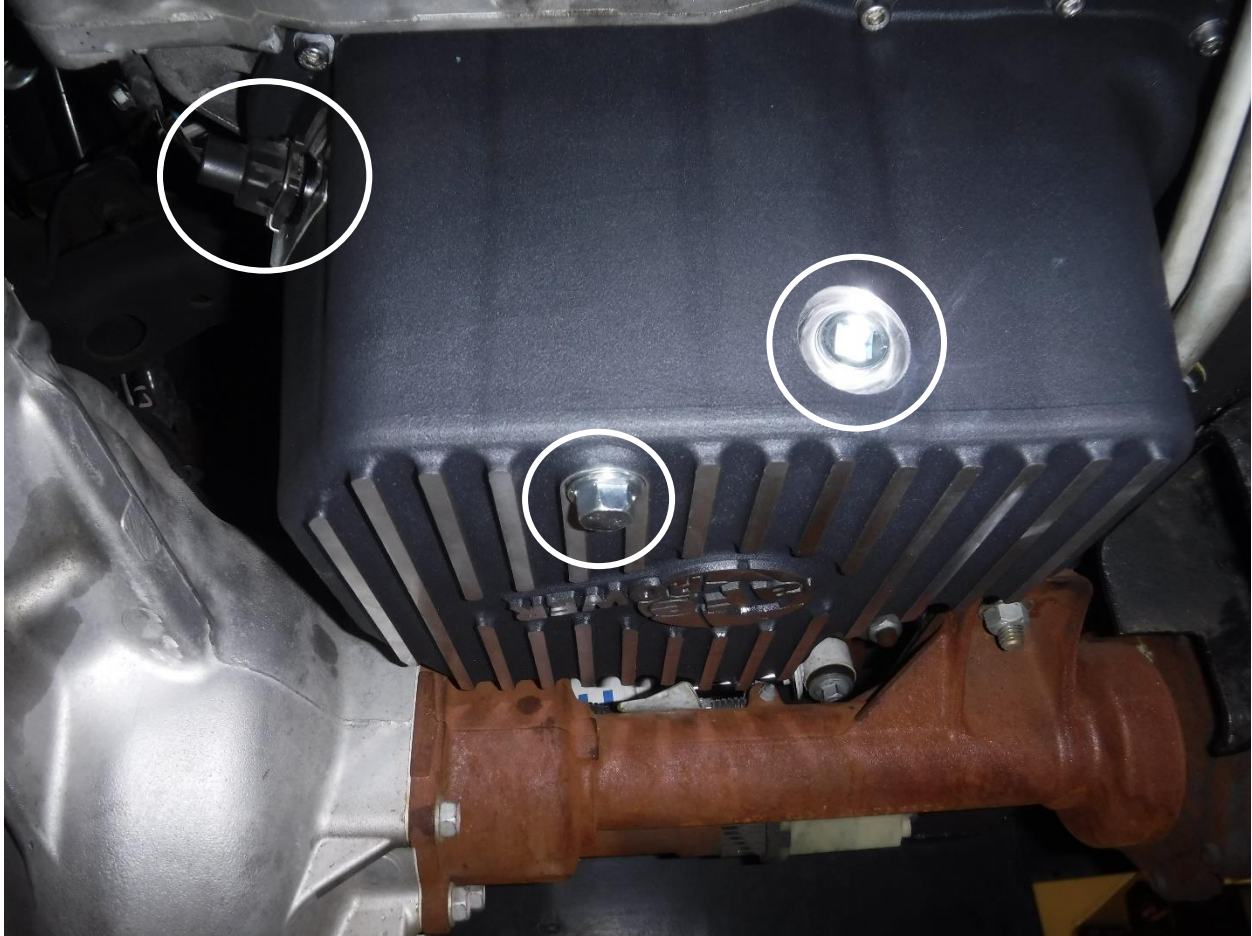
24. Continue installing the 14 remaining M6x1.0x20 socket head screws and M6 flat washers finger tight.

25. Torque the mounting screws to 8 ft. -lbs. in a crisscross pattern.



Note: If using an oil heater, apply Teflon pipe sealant to it instead of the 1/2" NPT plug.

26. Apply Teflon pipe sealant tape to the threads of the supplied 1/2" NPT plug.

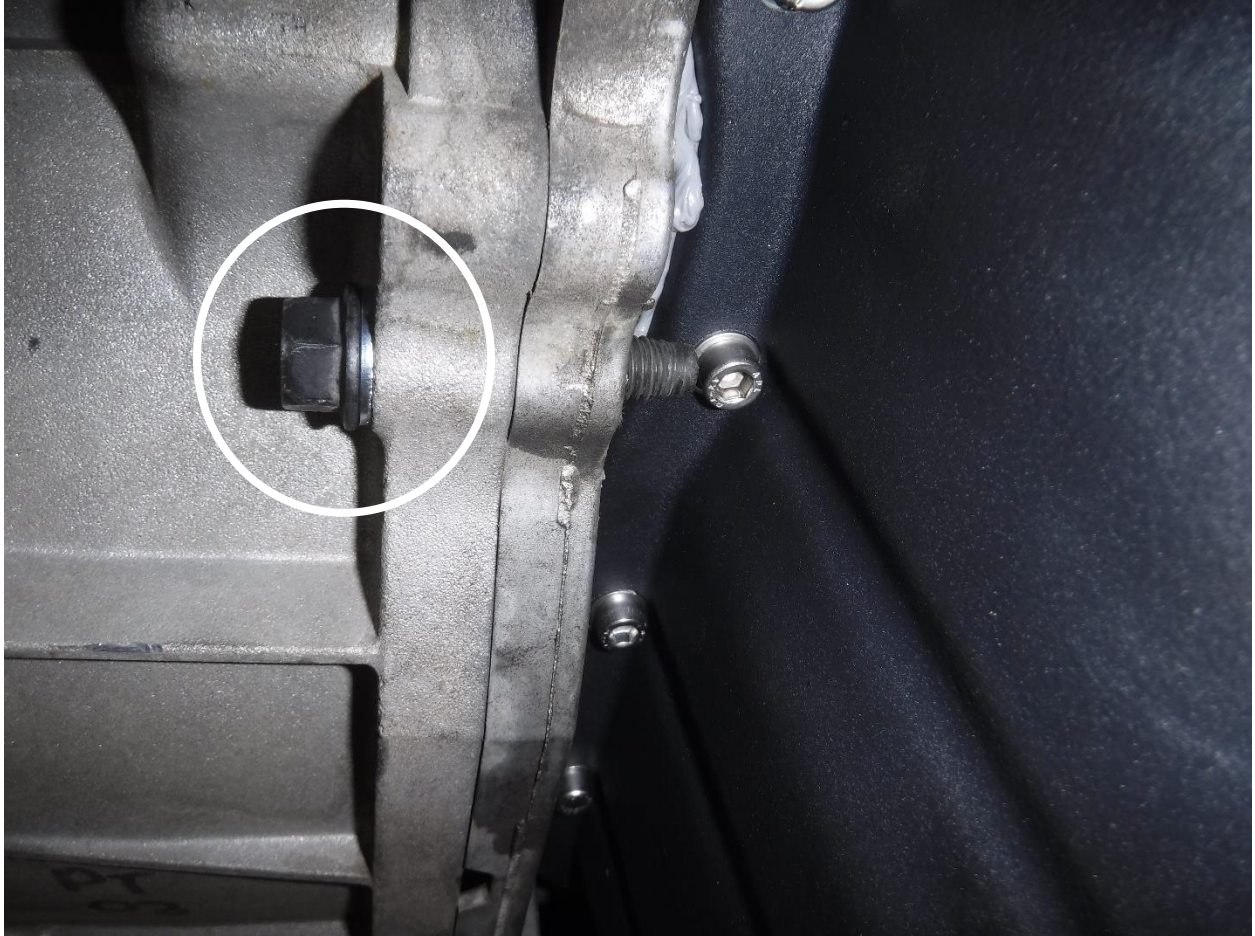


27.Reconnect the sensor connector.

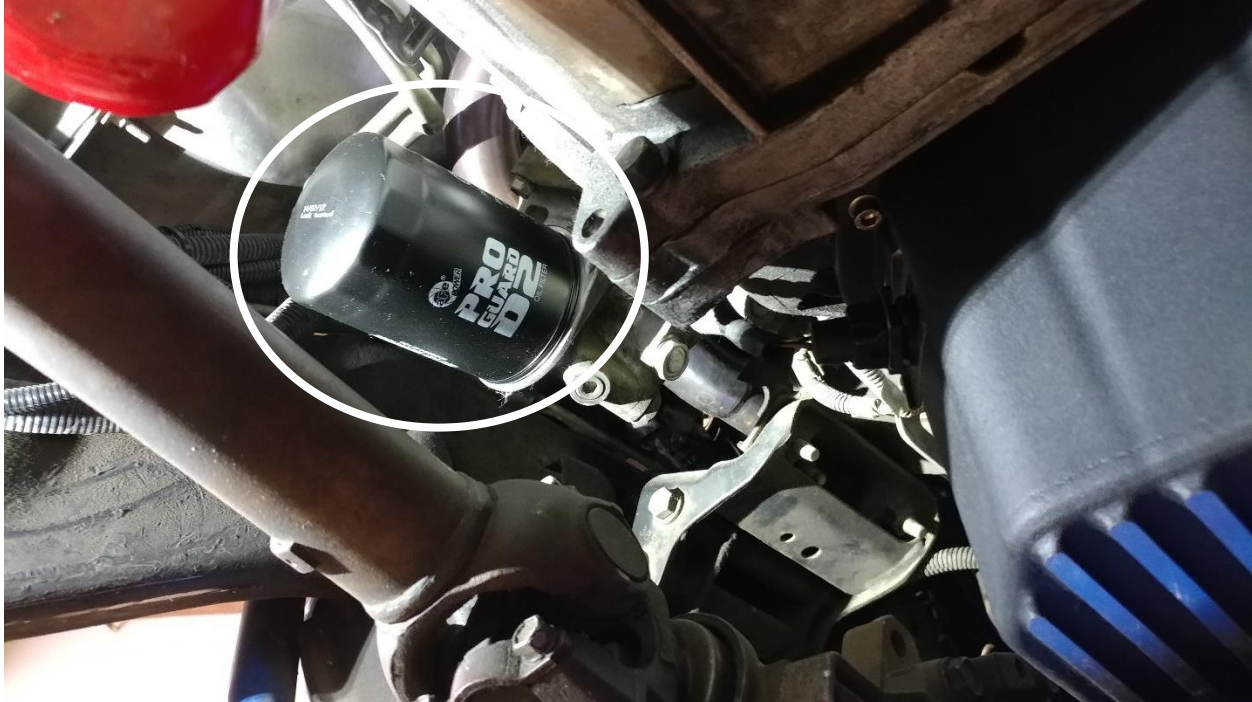
Note: If using an oil heater, install it instead of the 1/2" NPT plug.

28.Install the 1/2" NPT plug into the side of the aFe oil pan.

29.Install the supplied M12x1.25 magnetic drain plug and crush washer into the bottom drain hole.



30. Re-install the transmission bolt removed in step 11, using the supplied M10 flat washer.



31. Remove your old oil filter and allow the remaining oil to drain.

32. Install the supplied oil filter. Only hand tighten the filter.

33. Refill the engine with new oil. Your aFe pan holds about 2 quarts more than stock, about 12 quarts overall (Fill to full line on dipstick).

Note: The truck needs to be warmed up and oil has to have run through the oil filter in order to get an accurate reading on the dipstick.



34. Once you reinstall the cross member, your installation is complete. Verify all connections are secure before driving.

Warranty

General Terms:

- aFe warrants their products to be free from manufacturer’s defects due to workmanship and material.
- This warranty applies only to the original purchaser of the product and is non-transferrable.
- Proof of purchase of the aFe product is required for all warranty claims.
- Warranty is valid provided aFe instructions for installation and/or cleaning were properly followed.
- Proper maintenance with regular inspections of product is required to insure warranty coverage.
- Damage due to improper installation, abuse, unauthorized repair or alteration is not warranted.
- Incidental or consequential damages or cost, including installation and removal of part, incurred due to failure of aFe product is not covered under this warranty.
- All warranty is limited to the repair and/or replacement of the aFe part. To request Return Goods Authorization (“RGA”), email RGA@afepower.com or call (951)493-7100. Upon receipt of the RGA, you must return the product to the address provided in the RGA, freight prepaid and accompanied with a dated proof of purchase and the RGA. Upon receipt of the defective product and upon verification of proof of purchase, aFe will either repair or replace the defective product within a reasonable time, not to exceed thirty days.

| Product Category | P/N Prefix | Warranty Duration |
|--|-------------------|---------------------|
| Direct OE Replacement Filters | 10,11,30,31,71,73 | Life of the vehicle |
| Racing Filters | 18 | 1 year |
| Universal | 21,24,72 | 2 years |
| Air Intake Systems | 50,51,54,55,75 | 2 years |
| Exhaust Systems | 49 | 2 years |
| Intercoolers & Intercooler Tubes | 46-2 | 2 years |
| Intake Manifolds | 46-1 | 2 years |
| Differential Covers/Transmission Pans/ Oil Pans | 46-7 | Life of the vehicle |
| Exhaust Manifolds | 46 | 2 years |
| Throttle Body Spacers | 46-3 | 2 years |
| Fluid Filters | 44 | 90 days |
| Pre-Filters | 28 | 2 years |
| Heavy Duty OE Replacement | 70 | 2 years |
| PowerSports OE Replacement | 81,87 | 2 years |
| PowerSports Intake Systems | 85 | 2 years |

No other warranty expressed or implied applies nor is any person or advanced FLOW engineering authorized to assume any other warranty. Some States do not allow the exclusion or limitation of incidental or consequential damages or do not allow limitations on how long an implied warranty lasts, so the above limitations or exclusions may not apply to you. This warranty gives you specific legal rights, and you may also have other rights which vary from State to State.

This Page Was Left Intentionally Blank



advanced FLOW engineering, inc.

252 Granite Street Corona, CA 92879

TEL: 951.493.7100 • TECH: 951.493.7100 x23

E-Mail: Tech@aFepower.com

06-80982