



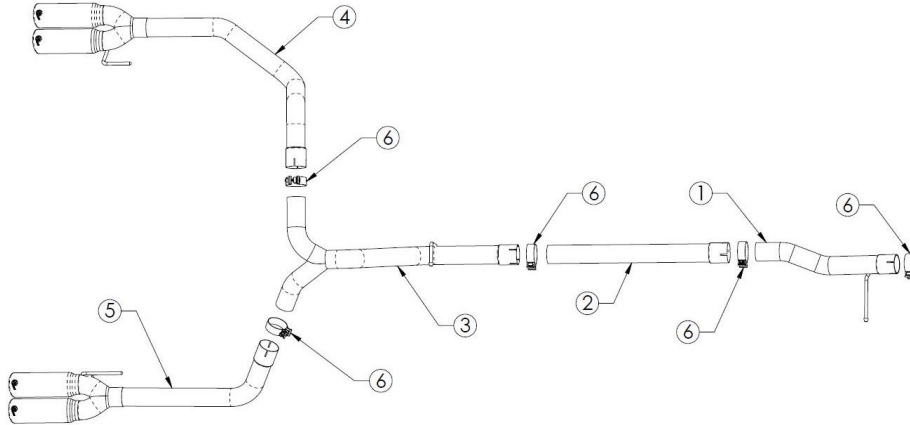
INSTALLATION INSTRUCTIONS

DPF-Back Exhaust

MAKE: GM Trucks
 MODEL: 1500
 YEAR: 2023-2024
 ENGINE: L6-3.0L (LZO)

49-34146-B
 49-34146-P

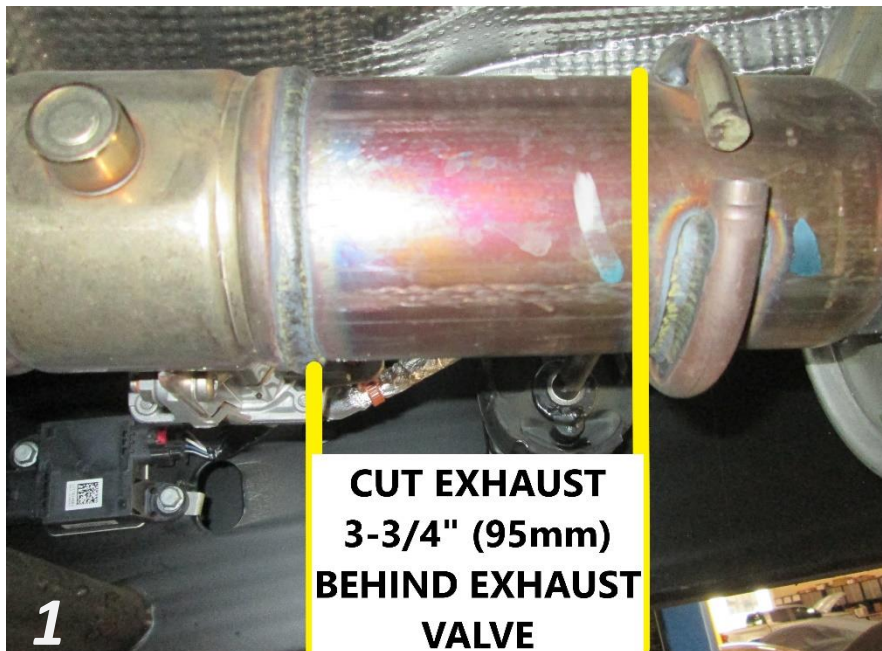
NOTE: Requires cutting OE Exhaust



Item	Description	Part Number	Quantity
1	Front Pipe	05-245515	1
2	Mid Pipe	05-245516	1
3	Y-Pipe	05-245038	1
4	Tail Pipe, Black Tip	05-245039B	1
4	Tail Pipe, Polished Tip	05-245039P	1
5	Tail Pipe, Black Tip	05-245040B	1
5	Tail Pipe, Polished Tip	05-245040P	1
6	Clamp, Band 3"	05-41055	5

aFe POWER recommends professional installation on this product. Thoroughly inspect the aFe POWER exhaust system to make sure there is no damage from shipping (if damage is noted, immediately contact aFe POWER customer service). Allow time for your vehicle to cool down prior to installation. When working on your vehicle proceed with caution. Wear protective safety equipment; eye goggles and gloves to ensure a safe installation.

Install band clamps to proper torque specifications of 40-45 ft-lb.





INSTALLATION INSTRUCTIONS

MAKE: GM Trucks
MODEL: 1500
YEAR: 2023-2024
ENGINE: L6-3.0L (LZO)

DPF-Back Exhaust

49-34146-B

49-34146-P

NOTE: Requires cutting OE Exhaust

1. **(Read instructions prior to installation.)** It is recommended to not fully tighten the exhaust until it has been fully installed. Leave loose for adjustability.
2. Secure vehicle on jack stands (refer to your manual for specified jack stand positions).
3. For faster installation, spread out the parts of the exhaust alongside your vehicle as shown in the diagram above.
4. Secure the stock exhaust with jack/stands.
5. Cut the O.E. exhaust 3-3/4" (95mm) behind the exhaust valve.
6. Undo all the O.E. isolation mounts and remove O.E. exhaust.
7. Remove the O.E tips by popping the plastic shield off both bottom corner steps and removing the (x1) screw under the bumper. Then remove the (x6) screws on the top and bottom of the inside of the step. Then unbolt the (x2) screws holding reverse sensors on the inside of the bumper. Remove the step insert which will allow you to reach in and unbolt the (x2) bolts holding in the O.E. tip.
8. Install the front pipe behind the exhaust valve using the provided 3" band clamp.
9. Install the front pipe hanger into the OE Isolation mount.
10. For the CC/LB Install the extension pipe and provided 3" band clamp. For the CC/SB and the extension pipe is not needed.
11. Install the Mid Pipe using the provided 3" band clamp.
12. Install the Y-Merge Pipe using the provided 3" band clamp and O.E. isolation mounts.
13. Install the passenger's side tail pipe with tip using the provided 3" band clamp and O.E. isolation mount.
14. Install the driver's side tail pipe with tip using the provided 3" band clamp and O.E. isolation mount.
15. Align the exhaust system. Starting from the front of the vehicle, begin tightening down all clamps and hardware.
16. Re-install the step insert using the (x6) O.E. screws the plastic shield on the step using the (x1) O.E. screw. Then re-install the reverse sensors back into place using the (x2) O.E. screws.
17. Ensure that all the components of the AFE POWER exhaust system are aligned and are at a safe clearance from all wires, hoses, brake lines, body parts, and tires.
18. Start from the front of the AFE POWER exhaust system and evenly tighten all clamps and fasteners.
19. Start the vehicle and check for any leaks. If any leaks are found, determine cause and repair as necessary.
20. Remove vehicle from jacks stands.
21. It is recommended to re-tighten all clamps and hardware after 50-100 miles.