

INSTALLATION INSTRUCTIONS

SUBJECT: Heater Core Replacement Hose and Fitting for 2003-2024 RAM

FPE-2024-123
May, 2024
Page 1 of 3

FITMENT: 2003-2024 5.9L and 6.7L Cummins Equipped Dodge Ram 2500/3500 Pickup Trucks

KIT P/N: FPE-CUMM-HCL-0324

EST INSTALL TIME: 1 Hour

TOOLS REQUIRED: Pliers, 1/4" hex drive or socket, 7/8" deep well socket or wrench

KIT CONTENTS:

Item #	Description	QTY
1	Heater core hose	1
2	Heater core quick disconnect fitting	1
3	Hose clamp	2
4	Thread sealant	1



WARNINGS:

- Use of this product may void or nullify the vehicle's factory warranty.
- User assumes sole responsibility for the safe & proper use of the vehicle at all times.
- The purchaser and end user releases, indemnifies, discharges, and holds harmless Fleece Performance Engineering, Inc. from any and all claims, damages, causes of action, injuries, or expenses resulting from or relating to the use or installation of this product that is in violation of the terms and conditions on this page, the product disclaimer, and/or the product installation instructions. Fleece Performance Engineering, Inc. will not be liable for any direct, indirect, consequential, exemplary, punitive, statutory, or incidental damages or fines cause by the use or installation of this product.

PROCEDURE:

STEP 1: Disconnect both batteries and drain the coolant system.

STEP 2: Locate the upper heater core hose in the engine bay. Remove or loosen the hose clamp from the upper heater core hose.



STEP 3: Disconnect the upper heater core hose from the quick disconnect fitting on the passenger side of the cylinder head. Use a flat head screwdriver to pry the hose adapter off of the fitting. Remove the upper heater core hose from the engine bay.



STEP 4: Using a 7/8" deep well socket or wrench, remove the adapter fitting from the cylinder head.

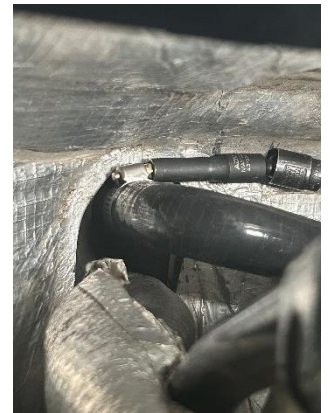
STEP 5: Apply thread sealant in a single bead around the lowest thread of the new heater core quick disconnect fitting.



STEP 6: Using a 7/8" deep well socket or wrench, install the quick disconnect fitting into the cylinder head where the OE fitting was removed.



STEP 7: Install the new Fleece Performance upper heater core hose and connect it to the upper heater core port and the quick disconnect fitting. Use the supplied hose clamps to secure both ends of the hose and tighten them with a 1/4" socket or flat head screwdriver.



STEP 8: Refill the coolant system and reconnect the battery terminals.

STEP 9: Start the vehicle and check for leaks.

