



## **Powerstroke Fuel Return Filter**

**Part # GRD67PS3002**

Thank you for purchasing our Powerstroke Fuel Return Filter Kit. Installation time for this kit will be around 1 hour, depending on experience.

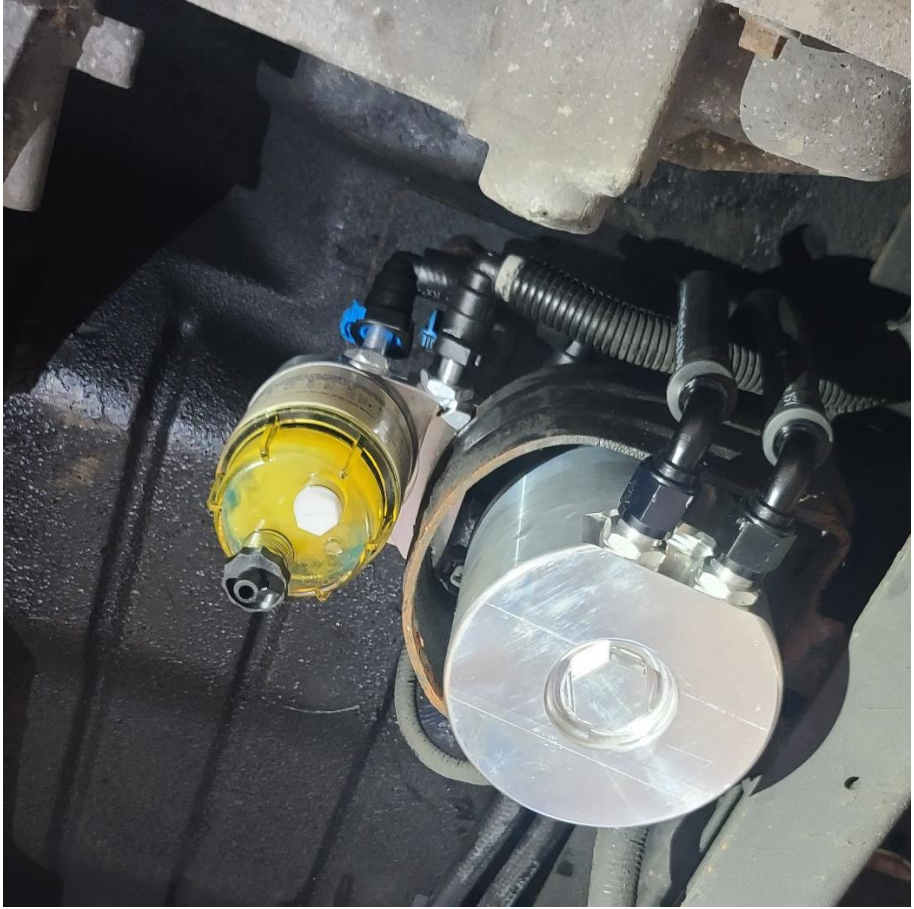
Your kit should include the following items:

- Filter Head (assembled with fittings and set screws)
- Bypass Hose Assembly
- Filter

**\*\*Please verify all items are present. If not, please contact us directly for replacement or additional parts. \*\***

**Fuel systems are VERY sensitive. MAKE SURE that all fuel line connections are cleaned PRIOR to disconnection and stay clean while disconnected!**

1. Install the filter onto the filter head prior to installing the assembly onto the truck. This helps ensure minimal debris is getting into the fuel system.
2. Install the filter head assembly onto the inboard side of the steel guard that wraps around the OEM fuel pump module under the driver side of the truck.



3. After installing the filter head onto the guard, tighten the set screws on both sides of the filter head. The serrated set screw will dig into the guard and secure the filter head to the guard.
4. Carefully disconnect the plastic OEM fuel return line from the top of the OEM fuel pump module. This will be the line closest to you when looking at the pump model from underneath the truck.



5. The factory return line will get connected to the horizontal fitting on the return filter head that points towards the front of the truck. When connecting the fuel lines, ensure that they are fully locked onto the quick connect fittings.



6. You will now connect the bypass hose assembly that is included in the kit. One end of the Bypass Hose Assembly will connect the angled quick connect fitting that is installed in the return filter head, and the other end of the Bypass Hose Assembly will connect to the return port on the OEM pump module (where the factory return line was removed from in step 4).
7. Make sure all fuel line connections are connected securely and locks are engaged.
8. Cycle ignition on for 30 seconds, DO NOT START THE TRUCK. You should hear the fuel pump run and air purging through the return filter. This is normal.
9. Re-check all fuel line connections and ensure there are no leaks. If there are ANY leaks, repair the leaks and repeat steps 8 and 9.

Once confirmed that there are no leaks, start the truck. The installation of the Return Filter Kit is complete!

**If you have any questions, contact G & R Diesel Parts Department 330-695-2039 ext2**