

INSTALLATION GUIDE

2019+ Chevrolet Silverado/GMC Sierra 1500
Performance Transmission Cooler | SKU: MMTC-T1-19

TABLE OF CONTENTS

1. RESOURCES & CONTACT INFO
2. IMPORTANT SAFETY INFORMATION
INSTALL TIME & DIFFICULTY
REQUIRED TOOLS
5. DISPOSAL & WARRANTY INFORMATION

RESOURCES & CONTACT



CALL 1.877.466.4744

CUSTOMER SERVICE HOURS: MON-FRI 8:30AM-5:00PM EST



@MISHIMOTO



@GOMISHIMOTO



MISHIMOTO



@MISHIMOTO



ENGINEERING BLOG

WWW.MISHIMOTO.COM/ENGINEERING

IMPORTANT SAFETY INFORMATION

- › Mishimoto recommends you use safety glasses and protective gloves during the installation of our products
- › Raise vehicle only on jack stands or on a vehicle lift
- › Allow vehicle to cool completely prior to attempting installation
- › Do not run the engine or drive the vehicle while overheating; serious damage can occur
- › Please dispose of any liquids properly
- › Mishimoto is not responsible for any vehicle damage or personal injury due to installation errors, misuse, or removal of Mishimoto products
- › If you need any assistance while installing our products, reach out to our Customer Service Team at 1-877-GOMISHI

REQUIRED TOOLS

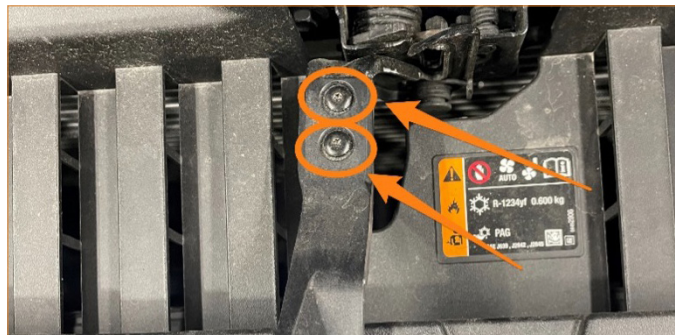
PICK TOOL	8MM ALLEN KEY OR SOCKET <i>(FOR TRANSMISSION FILL)</i>
TRIM TOOL OR POP-CLIP REMOVAL TOOL	15MM WRENCH
1/4" DRIVE RATCHET	19MM WRENCH
1/4" DRIVE 10MM SOCKET	22MM WRENCH
1/4" DRIVE TORQUE WRENCH	1-2 QT TRANSMISSION FLUID <i>(TYPE WILL DEPEND ON TRANSMISSION IN THE VEHICLE)</i>
3/8" DRIVE RATCHET	
3/8" DRIVE 15MM SOCKET	TRANSMISSION FLUID FUNNEL
3/8" DRIVE TORQUE WRENCH	
T20 TORX KEY OR SOCKET	
3MM ALLEN KEY OR SOCKET	

INSTALL TIME: 1 HOUR

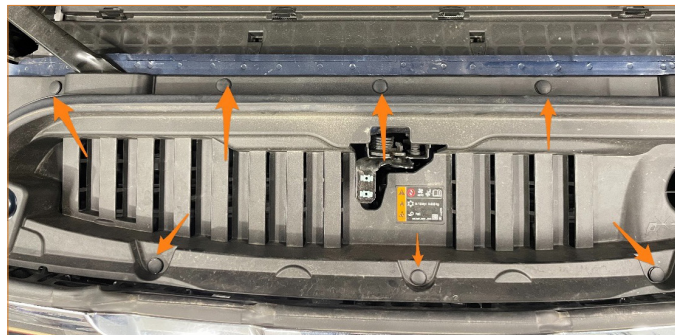
INSTALL DIFFICULTY: 

INSTALLATION INSTRUCTIONS

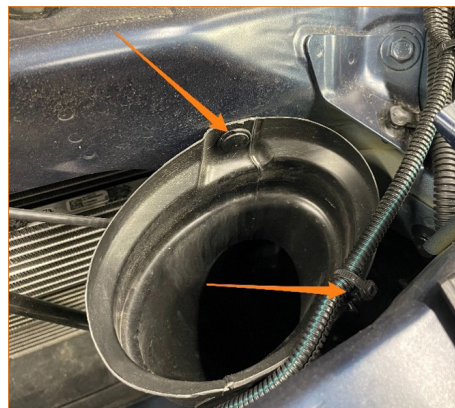
1. Open the hood and remove the 2X T20 Torx screws that fasten the hood latch release lever to the hood latch release mechanism. Remove the handle from the lever.



2. Remove the 10X push clips securing the upper radiator shroud to the vehicle and remove the shroud.



3. Remove the 1X push clip and 1X harness clip for the intake duct. The duct does not have to be removed, however, removing the fastener will allow you to push the duct out of the way in future steps.

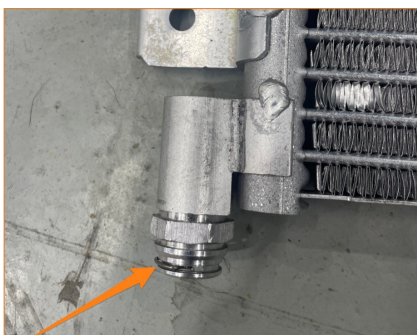
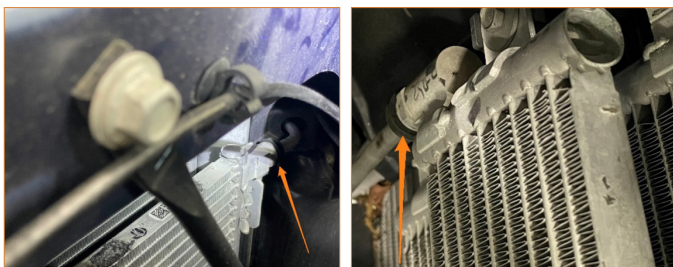


Continued on next page

4. Remove the 2x 15mm bolts holding the diagonal support bars to the core support. Then, move the support bars out of the way, swinging them toward the outside of the vehicle. It may be necessary to unclip the hood latch cable from the plastic clip.

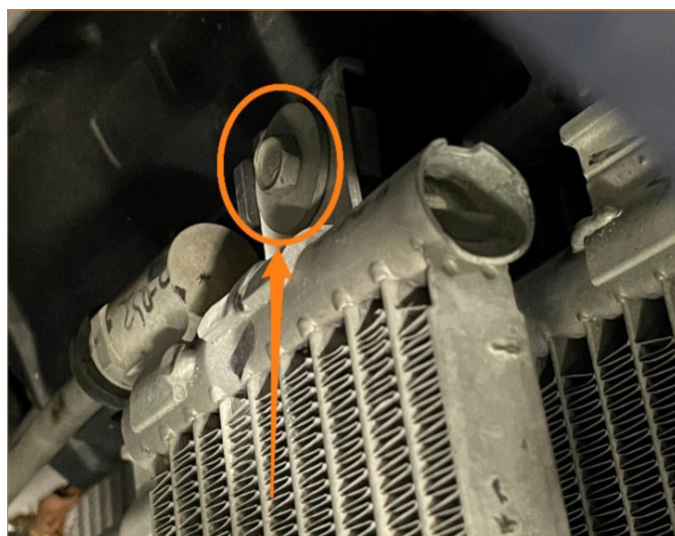


5. Remove the plastic cap that covers the fitting on the inlet and outlet of the transmission cooler by pushing it away from the cooler. Then, use a pick tool or similar to remove the metal clip that secures the line into the transmission cooler fittings (Shown outside of the vehicle).

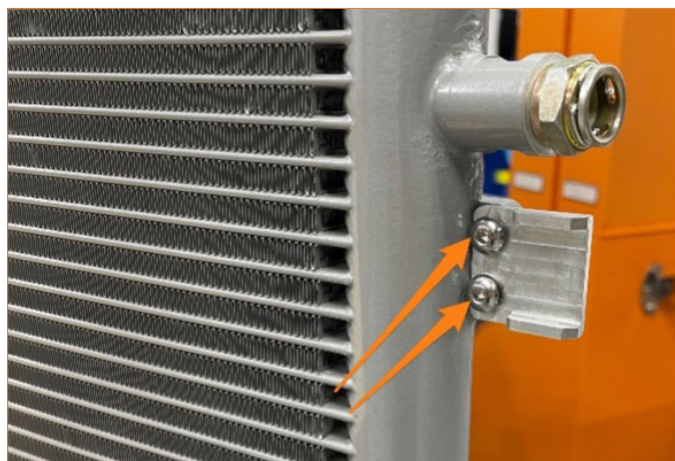


6. Place towels or other oil-absorbent material underneath the transmission cooler fittings. Then, remove the 1x 10mm bolt securing the transmission cooler to the cooling stack on the passenger side. Finally, work the transmission lines free from the transmission

cooler, starting with the passenger side line. Be careful not to bend or damage the transmission lines. Remove the factory transmission cooler from the vehicle.



7. Use the included 2x M5 bolts, lock washers, and washers to secure the billet bracket to the Mishimoto transmission cooler as shown. Leave the bolts loose enough so that the bracket can be adjusted on the vehicle, if necessary. Use fresh transmission fluid to lubricate the end of the factory transmission hard lines and the fittings on the Mishimoto transmission cooler. While the cooler is still out of the vehicle, verify that the transmission line fittings are tight using a 19mm wrench. Make sure to counterhold the transmission cooler using a 19mm wrench on the driver's side, and a 22mm wrench on the passenger side, to prevent damage to the cooler.



Continued on next page

8. Lower the Mishimoto transmission cooler into the vehicle. First, line up the bracket and transmission line on the driver's side. Push the transmission line into the fitting until an audible click is heard. Then, line up the transmission cooler with the passenger side transmission line and bracket with the bolt hole and insert the line into the fitting until an audible click is heard. Finally, secure the transmission cooler to the cooling stack using the factory 10mm bolt. Torque the bolt to 80in-lbs and tighten the 2x M5 bolts for the driver's side bracket using a 3mm Allen key.



9. Start the vehicle and let it idle for a few minutes to verify that none of the transmission lines or fittings are leaking.

10. Reinstall the diagonal braces and torque the 2x 15mm bolts to 43 ft-lbs. Reinstall the upper radiator cover and hood latch handle. Torque the hood latch handle torx bolts to 22 in-lbs.

11. Perform the factory transmission fluid level check and top off the fluid. An additional 0.5-1 quarts will be necessary to fill the transmission fluid to



Continued on next page

DISPOSAL INSTRUCTIONS

- › Do not dispose of any product as unsorted municipal waste. Use separate collection facilities. Contact your local authority for information regarding the collection systems available.
- › Never improperly dispose of any coolant, oil, or other chemicals

WARRANTY INFORMATION



- › All claims must be accompanied with a picture of the Mishimoto product showing the issue for which the claim is being submitted.
- › Mishimoto asks that the customer inspect their purchased item for any damage immediately upon arrival.
- › Any product deemed dead on arrival (DOA) must be claimed within 14 business days of delivery. Claims outside of this time frame will not be covered under the Mishimoto Lifetime Warranty.
- › This warranty does not include payment and/or reimbursement of the cost of labor in connection with the removal of any product returned pursuant to the warranty policy or in connection with the installation of any replacement items provided under the warranty policy.
- › Mishimoto has the right to refuse a claim at any time.

- › When Mishimoto accepts a claim, Mishimoto retains full discretion to choose if it will: (i) repair or replace purchaser's original Mishimoto product; (ii) replace purchaser's original Mishimoto product with the most current available model; or (iii) provide the purchaser with a gift card redeemable on Mishimoto.com in the amount of the original purchase price of the original Mishimoto product. The provision of a replacement of a Mishimoto product is subject to availability and Borne Off-Road retains the right to substitute any warranty claim item with a comparable item or credit at any time.
- › If Mishimoto determines that it will provide a replacement item in connection with a claim under this warranty policy, and such item is out of stock, Mishimoto will place the customer on backorder and ship the replacement product to the purchaser once it becomes available.
- › Mishimoto is not liable for incorrect shipments in connection with a claim if a claim form is completed incorrectly, or if a model number is not included in a claim.
- › If you have a vehicle equipped with an automatic transmission, please make sure to specify this within the text box on the claim form. Mishimoto is not responsible for incorrect replacement shipments if transmission type is not indicated.



WARNING
Cancer and
Reproductive Harm
www.P65Warnings.ca.gov

- › This product can expose you to chemicals which are known to the state of California to cause cancer. For more information visit: www.p65warnings.ca.gov