

INSTALL INSTRUCTIONS FOR 75-5096

BEFORE YOU START

This intake kit may not fit with the following Aftermarket Parts installed:

Body Lift or Lowering Kit

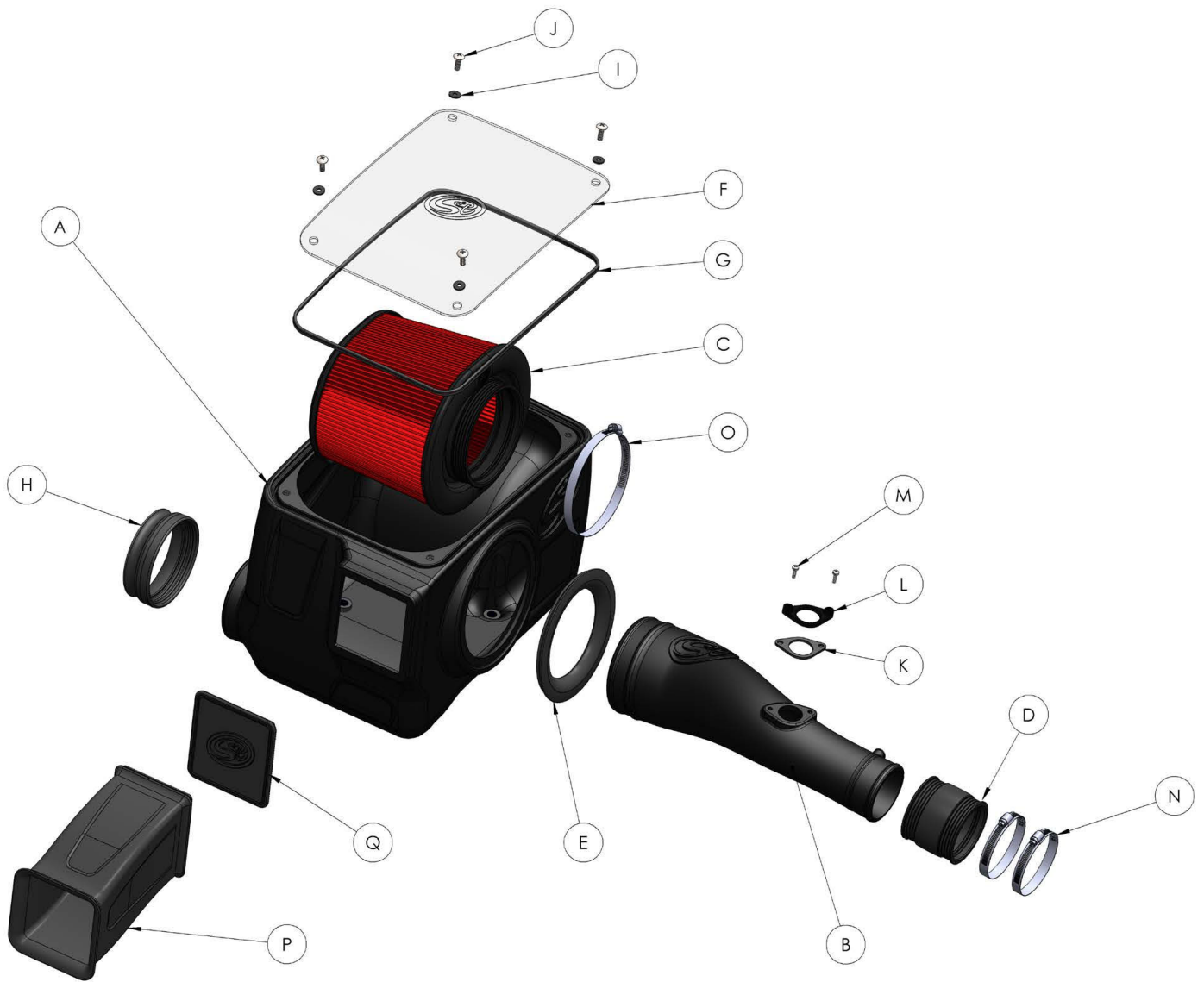
Custom Hood

Throttle Body Spacer / Upgrade

REQUIRED TOOLS

- 10mm, 12mm Wrench/Socket
- 5/16" Nut Driver or Flat Blade Screwdriver
- Phillips Screwdriver
- Panel Poppers

- Please read the entire product guide before proceeding.
- Ensure all parts are present.
- If you are missing any of the components, call our customer support at (909) 947-0015.
- Do not work on your vehicle while the engine is hot.
- Make sure the engine is turned off and the vehicle is in Park or the Parking Brake is set.



ITEM	QTY	DESCRIPTION	PART NUMBER
A	1	AIR BOX	AL1278B-00
B	1	INTAKE TUBE	AL1278-00
C	1	AIR FILTER	KF-1035
D	1	COUPLER	AI1806C-00
E	1	TUBE SEAL	AI1717C-00
F	1	CLEAR LID	AI1890-00
G	1	LID SEAL	AI1766-05
H	1	FENDER SEAL	AI1859C-00
I	4	WASHER, SEALING	AI1571-00
J	4	SCREW, TRUSS, 1/4-20 X 3/4"	AI1684-00
K	1	MAF GASKET	AI1861-00
L	1	MAF PLATE	AI1860-00
M	2	SCREW, 8-32 X 3/4"	AI1252-00
N	2	HOSE CLAMP, #52	AG1007-00
O	1	HOSE CLAMP, #88	AG1011-00
P	1	AIR BOX COVER	AI1891C-00
Q	1	AIR BOX COVER SEAL	AI1892C-00

HARDWARE PACKS
HP1457-00
AG-1019
HP1452-00
AI1860-00
AI1861-00
AI1252-00
HP1403-00
AI1684-00
AI1571-00
HP1458-00
AI1890-00
AI1766-05

REV-D 08/15/2018

STEP 1

With the ignition switched off and the parking brake set, disconnect the negative battery cable on the passenger's side with a 10mm Socket/Wrench.

IMPORTANT: Failure to disconnect the battery for a minimum of 2 hours may cause the Check Engine Light to illuminate upon completion of the installation or subsequent operation. **DO NOT SKIP THIS STEP!**



STEP 2

Lift the engine cover and remove it from the vehicle.



STEP 3

Unfasten the MAF harness wire from the clip on the airbox lid and pop out the clip on the resonator.



STEP 4

Disconnect the MAF harness from the sensor.



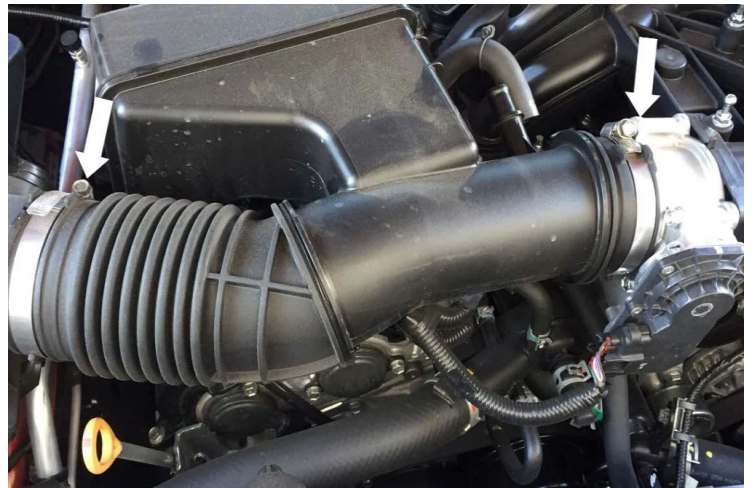
STEP 5

Disconnect the CCV hose from the stock intake tube. Squeeze the hose clamp and pull out.



STEP 6

Loosen the hose clamp by the throttle body and stock airbox with a 10mm Socket/Wrench and remove the stock intake tube from the vehicle.



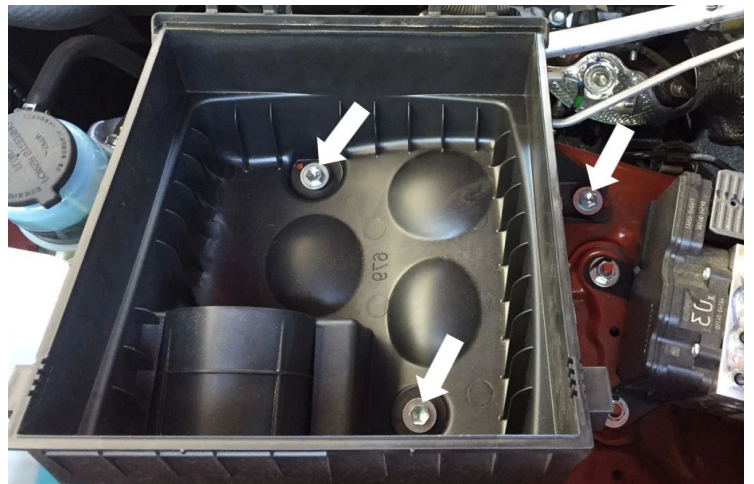
STEP 7

Unfastening the two clips securing the stock airbox lid. Remove the stock airbox lid and filter.



STEP 8

Remove the three screws securing the stock airbox with a 12mm Socket/Wrench. These screws will be reused in Step 16.



STEP 9

Carefully remove the MAF sensor from the stock intake tube and install it onto the Intake Tube (B) with the supplied 8-32 Screws (M), MAF Plate (L), MAF Gasket (K) with a Screwdriver.



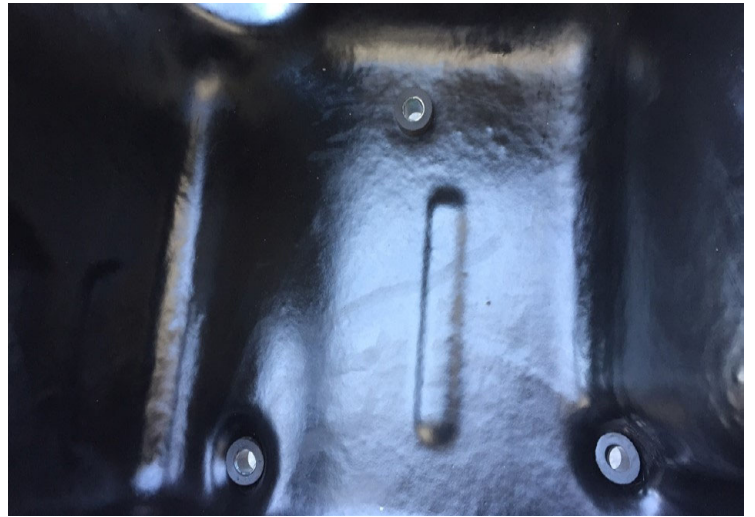
STEP 10

Remove the grommet and metal bushing from the stock airbox. Removing the metal bushing first will help to remove the grommet easier.



STEP 11

Install the grommet into Airbox (A) first and then the metal bushing.



STEP 12

Install the Tube Seal (E) onto the Airbox (A).



STEP 13

Install the Fender Seal (H) onto the Airbox (A).



STEP 14

Determine if you want to install the Auxiliary Scoop (P) or Box Plug (Q) on the Airbox (A). See the “Air Box Plug” note to decide the desired setup.



STEP 14 (IMAGE 2)



STEP 15

Place Airbox (A) into the truck.



STEP 16

Use the screws removed in Step 8 and secure the Airbox (A) with a 12mm Socket/Wrench.



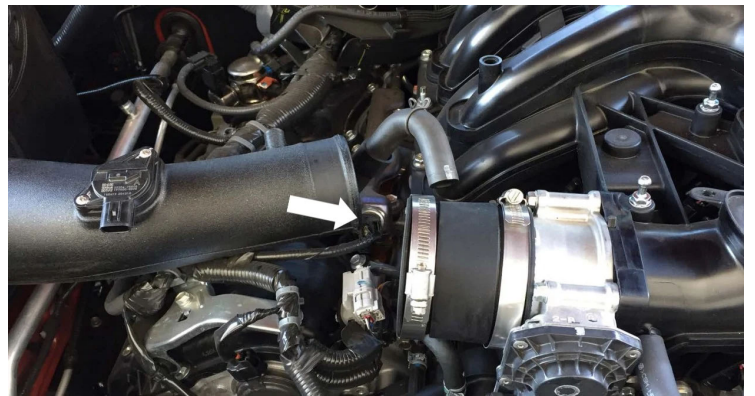
STEP 17

Insert the Intake Tube (B) into the Airbox (A).



STEP 18

Install the Coupler (D) onto the throttle body with two #52 Hose Clamps (N) then insert the Intake Tube (B) into the coupler. Tighten all hose clamps.



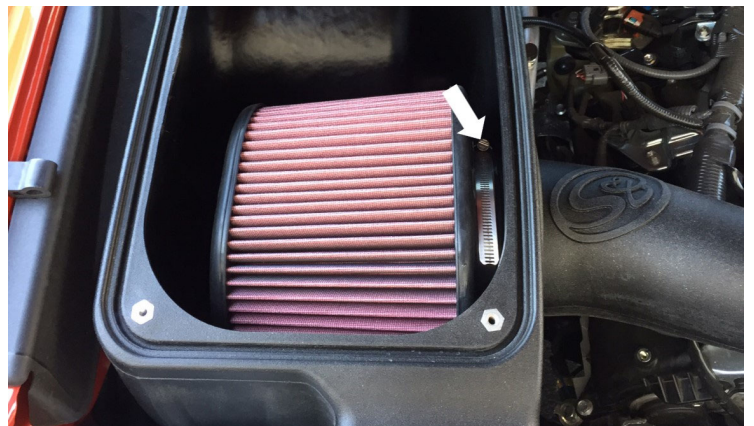
STEP 19

Reconnect the CCV hose and hose clamp into the CCV vent on the Intake Tube (B).



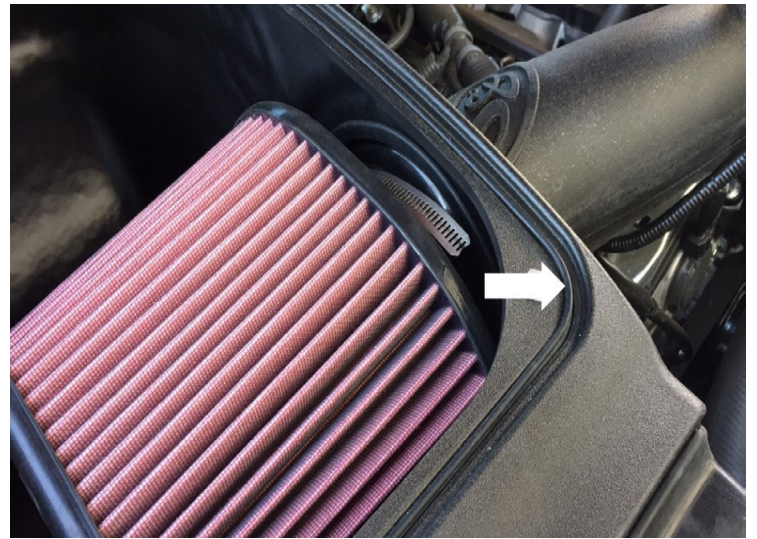
STEP 20

Install the Air Filter (C) onto the Intake Tube (B) and tighten the #88 Hose Clamp (O).



STEP 21

Press the Lid Seal (G) into the grooves on top of the Airbox (A).



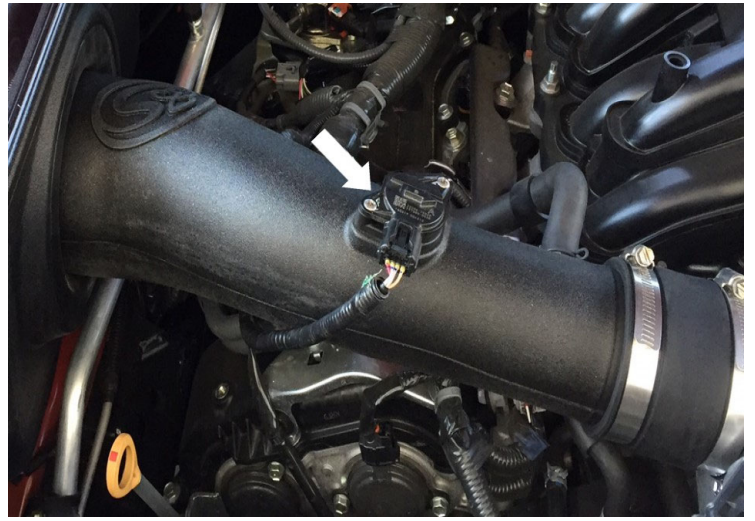
STEP 22

Remove the protective covering on the Clear Lid (F) then install the clear lid onto the Airbox (A) with the 1/4-20 Screws (J) and Washers (I) using a Screwdriver.



STEP 23

Reconnect the MAF harness into the sensor.



STEP 24

Reinstall the engine cover.



STEP 25

Reconnect the negative terminal on the battery. Inspect your installation, make sure the kit is properly positioned and all fasteners are secure. Affix the ID label near the intake kit. The installation is now complete.

