

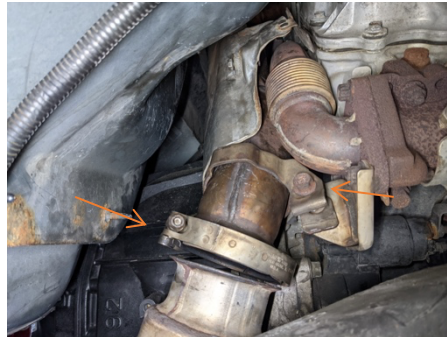


2001-2004 LB7 Duramax 3" Down Pipe

Covers installation of PN: WCF100119

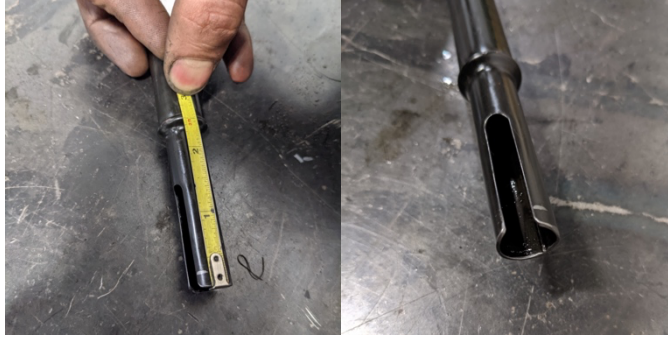


1. **IMPORTANT!** This product features a fiberglass heat wrap. Wear gloves and eye protection when handling and during installation.
2. Remove the passenger side fender liner.
3. Remove the lower down pipe clamp.

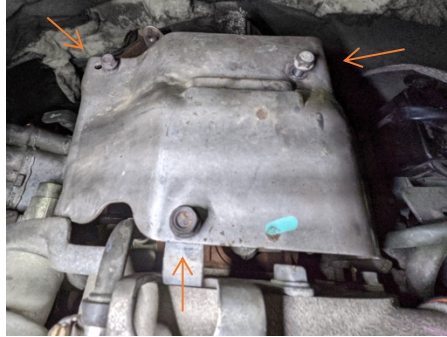


4. Remove the mounting bolt for the down pipe.

5. Remove the two nuts for the trans dipstick tube. Remove the dipstick tube for down pipe removal and installation. To help with dipstick tube installation, trim the bottom of the tube making sure to smooth out the edges. Approximately 2.5" to crimp (see photo). The tube will now be easier to remove and reinstall.



6. From the top, remove the turbocharger heat shield.



7. Remove the down pipe heat shield. This can be pulled out through the gap on the driver's side of the turbo from the inside of the engine compartment.

8. Remove the four 12 point bolts and two nuts at the turbo exhaust housing that hold the downpipe to the turbo exhaust housing.



9. To get the OEM down pipe out, remove the down pipe out the passenger wheel well. You may have to rotate the down pipe to remove, but it will come out by working it through the passenger wheel well.



10. Clean the turbo flange surface and verify that all the threads are clean and undamaged.

11. Inspect the turbo flange gasket and replace if damage is found. GM Part Number is 97192619.



12. Guide the new down pipe through the passenger wheel well with the flange facing forward.
13. Loosely install the 4 bolts and 2 nuts on the down pipe. We recommend using assembly lube or anti seize on the fasteners.
14. Torque all flange bolts and nuts to 39 ft lbs.
15. Start the vehicle and check for exhaust leaks at the top and bottom connections of the down pipe.
16. Reinstall the turbo heat shield.
17. Reinstall the fender liner.

Any Questions, Comments, or Feedback?

Reach us by Email- Sales@wcfab.com

Or the shop phone- 630-277-8239

Thank you for purchasing from Wehrli Custom Fabrication!